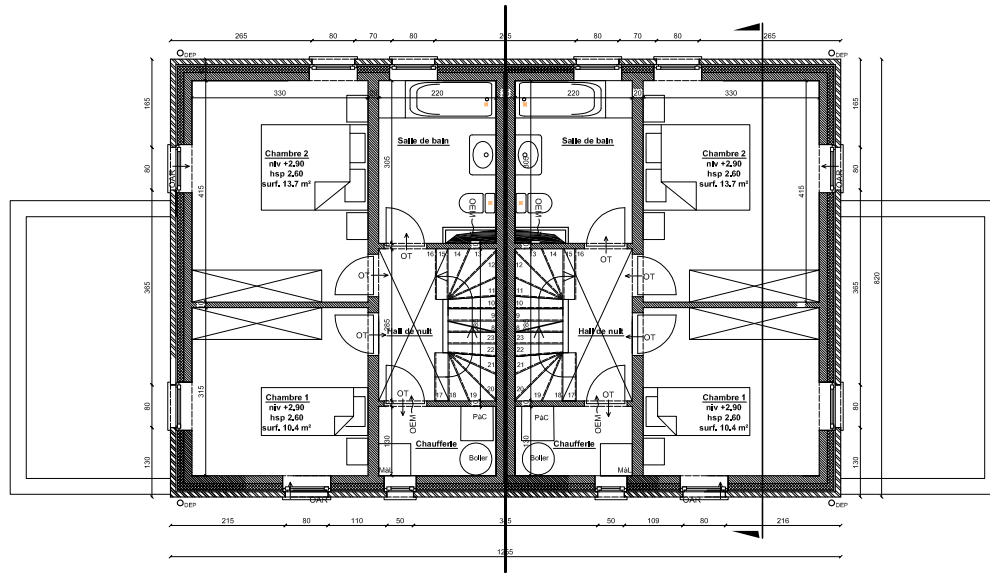
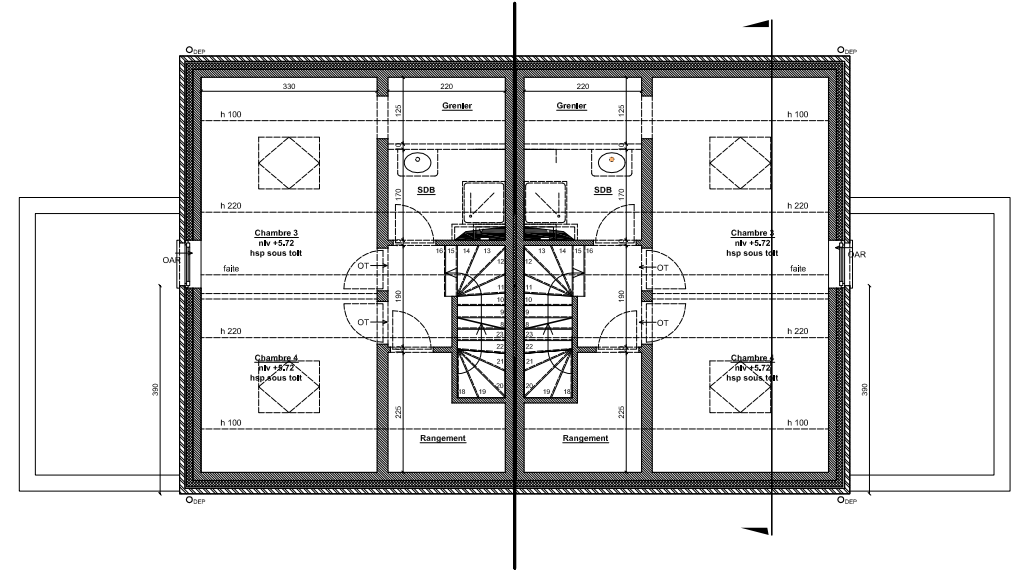


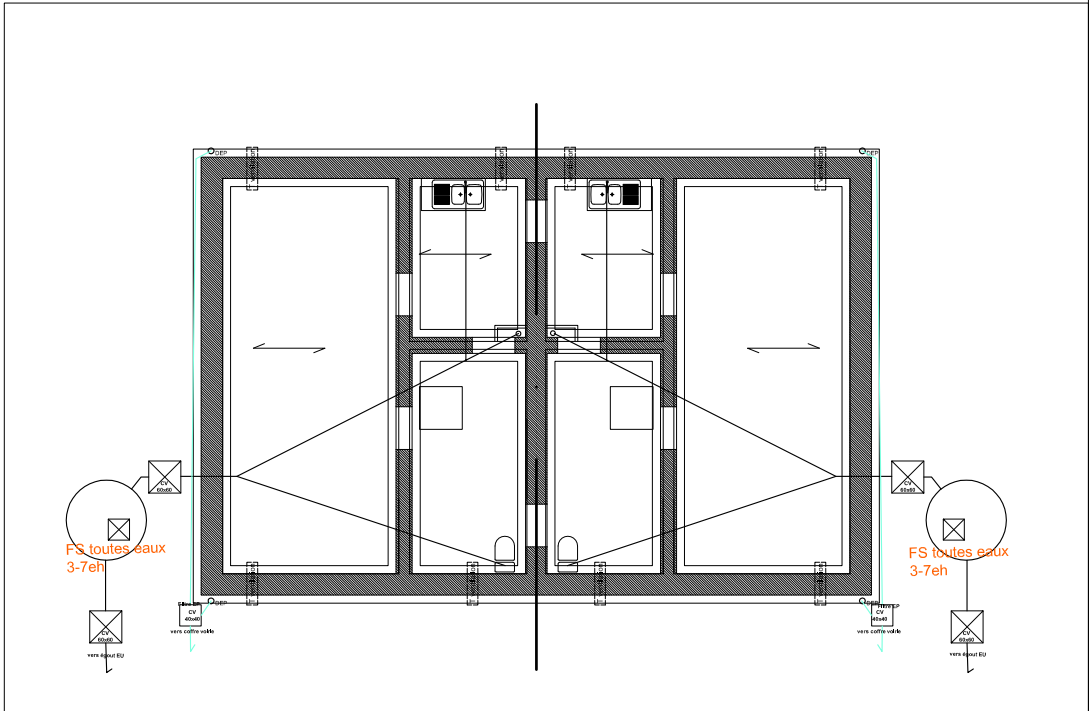
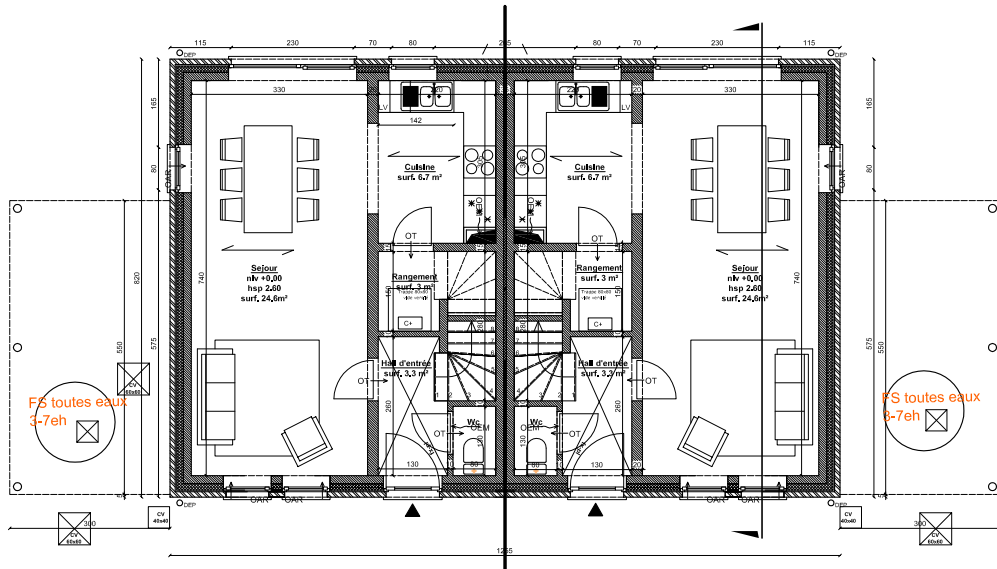
NIVEAU +1



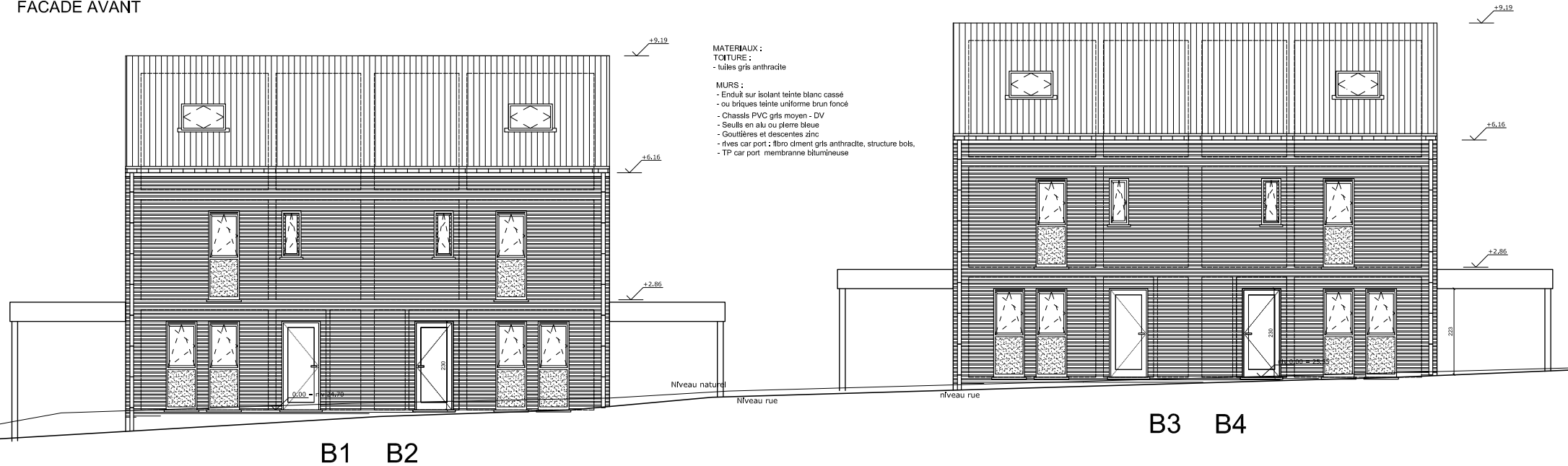
NIVEAU +2 (aménageable)



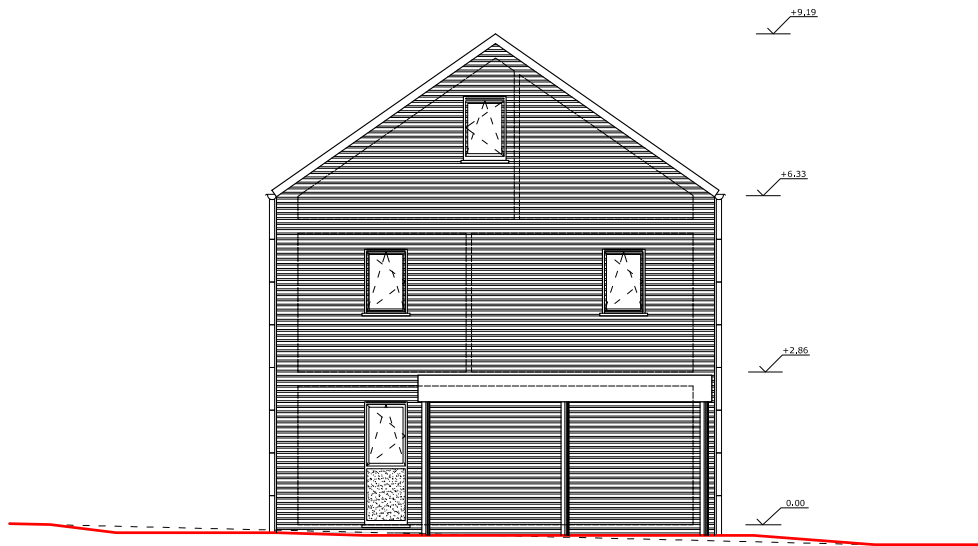
NIVEAU 0



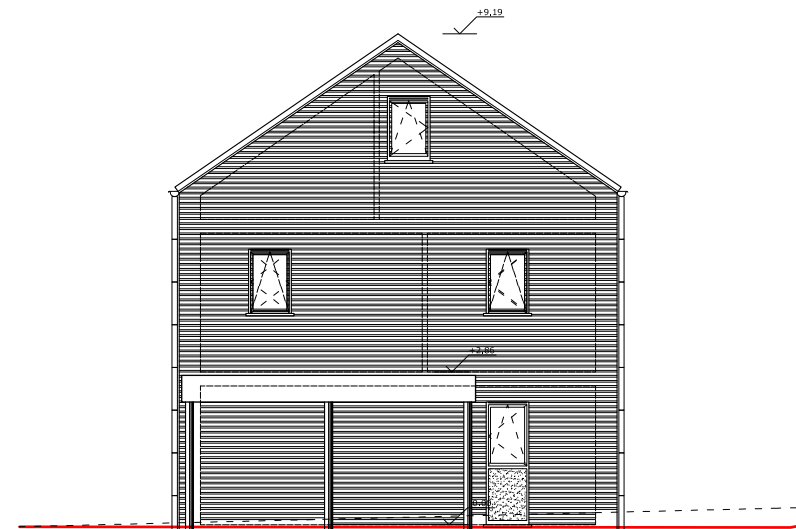
FACADE AVANT



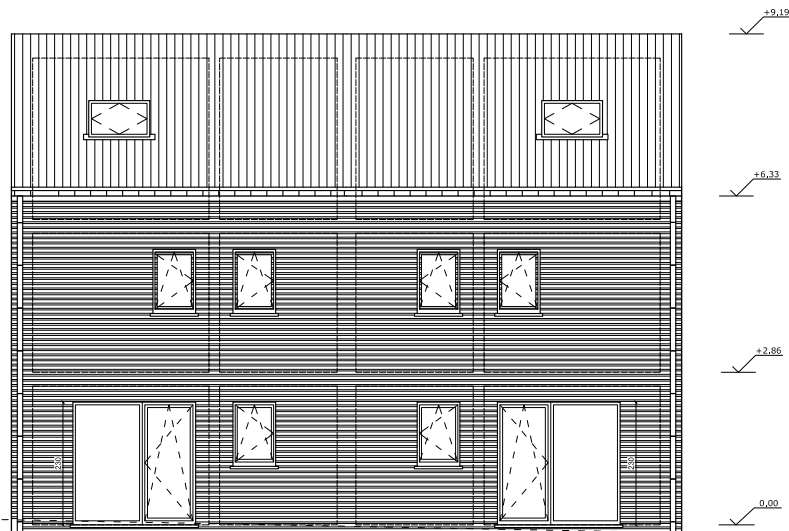
FACADE LATERALE gauche



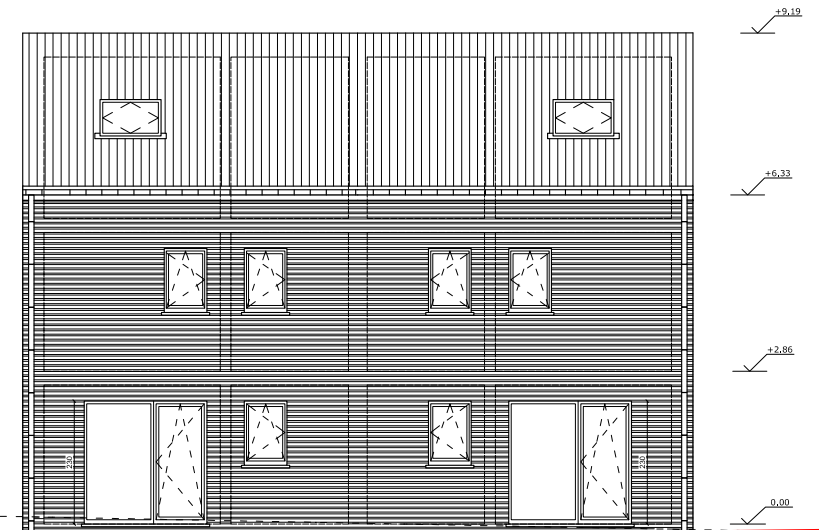
FACADE LATERALE droite



FACADE ARRIERE



FACADE ARRIERE



COUPE A-A

- TOITURE :
- tuiles grès anthracite
 - lattes, contre-lattes, sous toiture
 - chevrons 4/23 + Isolant LM 22 cm
 - pannes et faîtière
 - combles non aménagés
 - pare-vapeur
 - contre latte
 - plaque de plâtre

- MURS :
- Briques 9cm teinte uniforme brun foncé
 - lame d'air 3 cm
 - Isolant PUR 12cm
 - Blocs Terre cuite 14 cm
 - plafonnage

- Chassis PVC gris moyen - DV
- Seuils p-b
- gouttières et descentes zinc

- SOLS :
- Carrelages
 - Chape 8 cm
 - PUR projeté 8 cm
 - Hourdis + chape de compression 20 cm
 - Vide ventilé

